

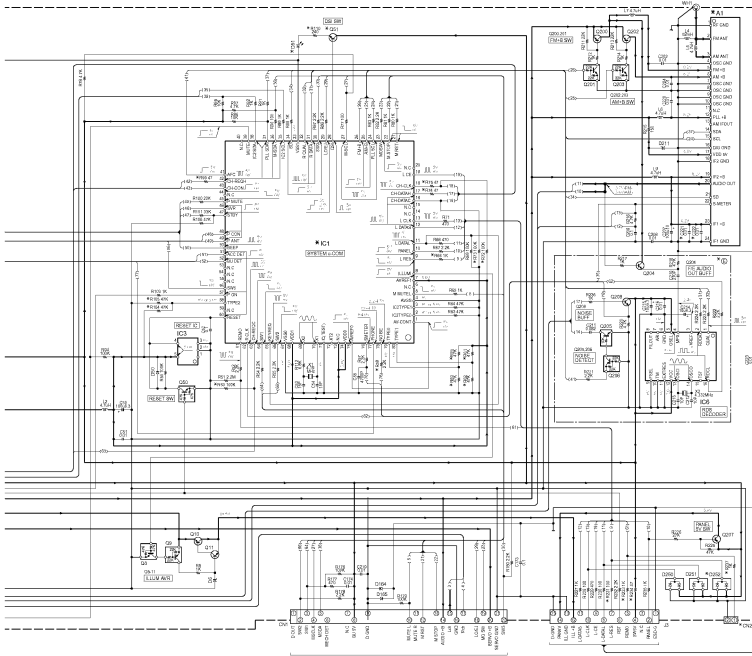
- IC1 \* ICAM15SD
- IC2 \* IFT181504R
- IC3 \* ICS29422FPF
- IC4 \* ICAM18RQ
- G1 32011-1132M-208 32019M91E171
- G2 32013-08820R5 320151746E
- G3 32013-09620R5 32012484R4/42013
- G4 32013-10820R5 32011360E
- G5 32013-11020R5 3201336E
- G6 32013-11220R5 3201336E
- G7 32013-11420R5 3201336E
- G8 32013-11620R5 3201336E
- G9 32013-11820R5 3201336E
- G10 32013-12020R5 3201336E
- G11 32013-12220R5 3201336E
- G12 32013-12420R5 3201336E
- G13 32013-12620R5 3201336E
- G14 32013-12820R5 3201336E
- G15 32013-13020R5 3201336E
- G16 32013-13220R5 3201336E
- G17 32013-13420R5 3201336E
- G18 32013-13620R5 3201336E
- G19 32013-13820R5 3201336E
- G20 32013-14020R5 3201336E
- G21 32013-14220R5 3201336E
- G22 32013-14420R5 3201336E
- G23 32013-14620R5 3201336E
- G24 32013-14820R5 3201336E
- G25 32013-15020R5 3201336E
- G26 32013-15220R5 3201336E
- G27 32013-15420R5 3201336E
- G28 32013-15620R5 3201336E
- G29 32013-15820R5 3201336E
- G30 32013-16020R5 3201336E

- D1 32013-15150-168 3201336E
- D2 32013-15150-168 3201336E
- D3 32013-15150-168 3201336E
- D4 32013-15150-168 3201336E
- D5 32013-15150-168 3201336E
- D6 32013-15150-168 3201336E
- D7 32013-15150-168 3201336E
- D8 32013-15150-168 3201336E
- D9 32013-15150-168 3201336E
- D10 32013-15150-168 3201336E
- D11 32013-15150-168 3201336E
- D12 32013-15150-168 3201336E
- D13 32013-15150-168 3201336E
- D14 32013-15150-168 3201336E
- D15 32013-15150-168 3201336E
- D16 32013-15150-168 3201336E
- D17 32013-15150-168 3201336E
- D18 32013-15150-168 3201336E
- D19 32013-15150-168 3201336E
- D20 32013-15150-168 3201336E
- D21 32013-15150-168 3201336E

- IC5020A A ANK181919-21
- IC5020B B ANK181919-21
- IC5020C C ANK181919-21
- IC5020D D ANK181919-21
- IC5020E E ANK181919-21
- IC5020F F ANK181919-21
- IC5020G G ANK181919-21
- IC5020H H ANK181919-21
- IC5020I I ANK181919-21
- IC5020J J ANK181919-21
- IC5020K K ANK181919-21
- IC5020L L ANK181919-21
- IC5020M M ANK181919-21
- IC5020N N ANK181919-21
- IC5020O O ANK181919-21
- IC5020P P ANK181919-21
- IC5020Q Q ANK181919-21
- IC5020R R ANK181919-21
- IC5020S S ANK181919-21
- IC5020T T ANK181919-21
- IC5020U U ANK181919-21
- IC5020V V ANK181919-21
- IC5020W W ANK181919-21
- IC5020X X ANK181919-21
- IC5020Y Y ANK181919-21
- IC5020Z Z ANK181919-21

- D22 32013-15150-168 3201336E
- D23 32013-15150-168 3201336E
- D24 32013-15150-168 3201336E
- D25 32013-15150-168 3201336E
- D26 32013-15150-168 3201336E
- D27 32013-15150-168 3201336E
- D28 32013-15150-168 3201336E
- D29 32013-15150-168 3201336E
- D30 32013-15150-168 3201336E
- D31 32013-15150-168 3201336E
- D32 32013-15150-168 3201336E
- D33 32013-15150-168 3201336E
- D34 32013-15150-168 3201336E
- D35 32013-15150-168 3201336E
- D36 32013-15150-168 3201336E
- D37 32013-15150-168 3201336E
- D38 32013-15150-168 3201336E
- D39 32013-15150-168 3201336E
- D40 32013-15150-168 3201336E
- D41 32013-15150-168 3201336E
- D42 32013-15150-168 3201336E

- IC5020A A ANK181919-21
- IC5020B B ANK181919-21
- IC5020C C ANK181919-21
- IC5020D D ANK181919-21
- IC5020E E ANK181919-21
- IC5020F F ANK181919-21
- IC5020G G ANK181919-21
- IC5020H H ANK181919-21
- IC5020I I ANK181919-21
- IC5020J J ANK181919-21
- IC5020K K ANK181919-21
- IC5020L L ANK181919-21
- IC5020M M ANK181919-21
- IC5020N N ANK181919-21
- IC5020O O ANK181919-21
- IC5020P P ANK181919-21
- IC5020Q Q ANK181919-21
- IC5020R R ANK181919-21
- IC5020S S ANK181919-21
- IC5020T T ANK181919-21
- IC5020U U ANK181919-21
- IC5020V V ANK181919-21
- IC5020W W ANK181919-21
- IC5020X X ANK181919-21
- IC5020Y Y ANK181919-21
- IC5020Z Z ANK181919-21



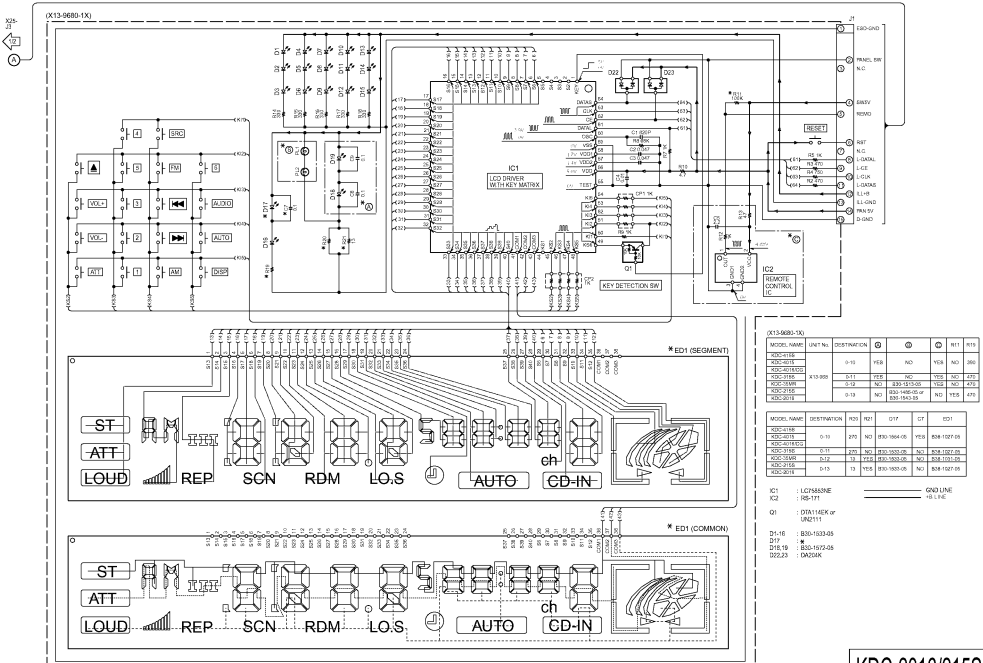
MODEL NAME UNIT No. (1) (2) (3) (4) (5) (6) (7) (8) (9) (10) (11) (12) (13) (14) (15) (16) (17) (18) (19) (20) (21) (22) (23) (24) (25) (26) (27) (28) (29) (30) (31) (32) (33) (34) (35) (36) (37) (38) (39) (40) (41) (42) (43) (44) (45) (46) (47) (48) (49) (50) (51) (52) (53) (54) (55) (56) (57) (58) (59) (60) (61) (62) (63) (64) (65) (66) (67) (68) (69) (70) (71) (72) (73) (74) (75) (76) (77) (78) (79) (80) (81) (82) (83) (84) (85) (86) (87) (88) (89) (90) (91) (92) (93) (94) (95) (96) (97) (98) (99) (100)

MODEL NAME UNIT No. (1) (2) (3) (4) (5) (6) (7) (8) (9) (10) (11) (12) (13) (14) (15) (16) (17) (18) (19) (20) (21) (22) (23) (24) (25) (26) (27) (28) (29) (30) (31) (32) (33) (34) (35) (36) (37) (38) (39) (40) (41) (42) (43) (44) (45) (46) (47) (48) (49) (50) (51) (52) (53) (54) (55) (56) (57) (58) (59) (60) (61) (62) (63) (64) (65) (66) (67) (68) (69) (70) (71) (72) (73) (74) (75) (76) (77) (78) (79) (80) (81) (82) (83) (84) (85) (86) (87) (88) (89) (90) (91) (92) (93) (94) (95) (96) (97) (98) (99) (100)

MODEL NAME UNIT No. (1) (2) (3) (4) (5) (6) (7) (8) (9) (10) (11) (12) (13) (14) (15) (16) (17) (18) (19) (20) (21) (22) (23) (24) (25) (26) (27) (28) (29) (30) (31) (32) (33) (34) (35) (36) (37) (38) (39) (40) (41) (42) (43) (44) (45) (46) (47) (48) (49) (50) (51) (52) (53) (54) (55) (56) (57) (58) (59) (60) (61) (62) (63) (64) (65) (66) (67) (68) (69) (70) (71) (72) (73) (74) (75) (76) (77) (78) (79) (80) (81) (82) (83) (84) (85) (86) (87) (88) (89) (90) (91) (92) (93) (94) (95) (96) (97) (98) (99) (100)

**CAUTION** For continued safety, replace safety critical components only with manufacturer's recommended parts (refer to parts list).  
 Δ indicates safety critical components. To reduce the risk of electric shock, leakage current or resistance measurements shall be carried out (exposed parts are acceptably insulated from the supply circuit) before the appliance is returned to the customer.  
 DC voltages are as measured with a high impedance voltmeter. Values may vary slightly due to variations between individual instruments and units.

— SIGNAL LINE  
 — GND LINE  
 — +VDC



(X13-9680-1X)

MODEL NAME	UNIT No.	DESTINATION	①	②	③	④	R11	R19
KDC-1156		0-10	YES	NO	YES	NO	260	
KDC-2016								
KDC-1158	X13-980	0-11	YES	NO	YES	NO	270	
KDC-1159		0-12	NO	YES	YES	NO	270	270
KDC-2156		0-13	NO	YES	YES	NO	270	270
KDC-2018		0-13	NO	YES	YES	NO	270	270

(X13-9680-1X)

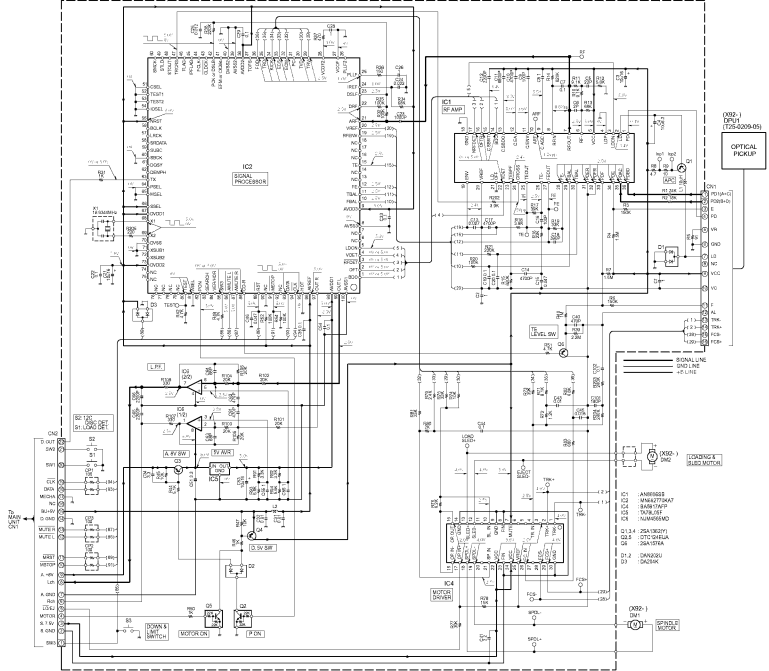
MODEL NAME	DESTINATION	Y03	Y01	D17	Q1	ED1
KDC-1156	0-10	270	NO	850-1964-05	YES	808-1027-05
KDC-2016						
KDC-1158	0-11	270	NO	850-1963-05	NO	808-1027-05
KDC-1159	0-12	13	YF0	850-1963-05	NO	808-1027-05
KDC-2156	0-13	13	YES	850-1963-05	NO	808-1027-05

- IC1 : LC75588NE
  - IC2 : DS1-171
  - Q1 : DT11MEK or UN2111
- GND LINE  
 +B L-PIC
- D1-16 : B30-1523-05  
 D17 : B30-1573-05  
 D22,23 : DA258K

**CAUTION:** For continued safety, replace safety critical components only with manufacturer's recommended parts (refer to parts list).  
 ⚠ Indicates safety critical components. To reduce the risk of electric shock, leakage current or resistance measurements shall be carried out (exposed parts are acceptably insulated from the supply circuit) before the appliance is returned to the customer.

• DC voltages are as measured with a high impedance voltmeter. Values may vary slightly due to variations between individual instruments, circuit and units.

CD PLAYER UNIT  
DKM-1520 (K32-4930-00)



25C1740S



TA78L05F



DTA114EK

DTA124EK

DA204K

DTC114YK

DTC124EK

PST9130NR

DTC143TK

DTC144EK

2SA1036K

2SA1362

2SA1576A

25B1184



AN8806SB



25B1277



AN8806SB



2SA1037K



DTC124EUA



NJM4565MD



DAN202U



- IC1 : AM9552S
- IC2 : MM4715KAT
- IC3 : BA9375FP
- IC4 : TDA1561
- IC5 : MM9556 MD
- Q1,3,4 : 2SA1037P1
- Q2,6 : COTC0451A
- Q5 : 2SA1576A
- Q1,2 : DAN202U
- Q3 : 2SA214K

KDC-2016/215S/35MR

KENWOOD